

I Didn't Know I Could Do THAT with CANDE !!!

(Part 2 – The CANDE “FILES” Command)

Unite 2005

MCP 4040

Monday 1:30

Doug Dobson



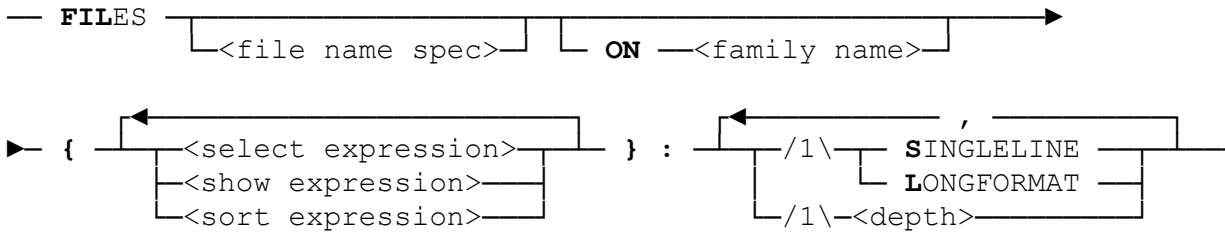
GoldEye Software, Inc

CANDE “FILES” command Cheat-sheet

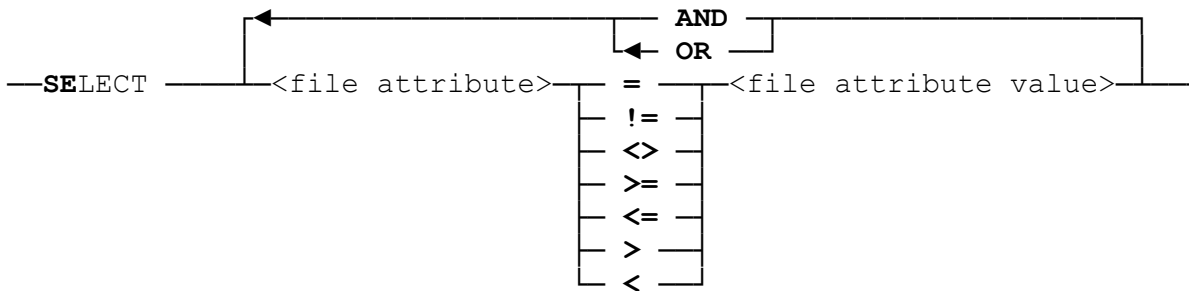
CANDE “FILES” command Cheat-sheet	1
<i>FILES</i> syntax (abridged).....	3
<i>SELECT</i> Expression.....	3
<i>SHOW</i> Expression.....	3
<i>SORT</i> Expression	3
List of File attributes.....	4
Differences in output:	4
<i>Examples</i>	6
1. How do I see the files that I worked on last?	6
2. How do I see files that haven’t been accessed in a long time?.....	7
3. How do I find all my WFL files?	7
4. What files are open right now?	8
5. I only want to see my COBOL85 files (SOURCE and OBJECT)	8
6. I want to see everything about the COBOL85 files.	9
7. How do I see files that were created yesterday between 1:30 PM and 6:00 PM? (Assuming today is Jan 24, 2001).....	10
8. I want to put a list of files into a file.	10
9. I want to remove the files in the above list.	10

FILES syntax (abridged)

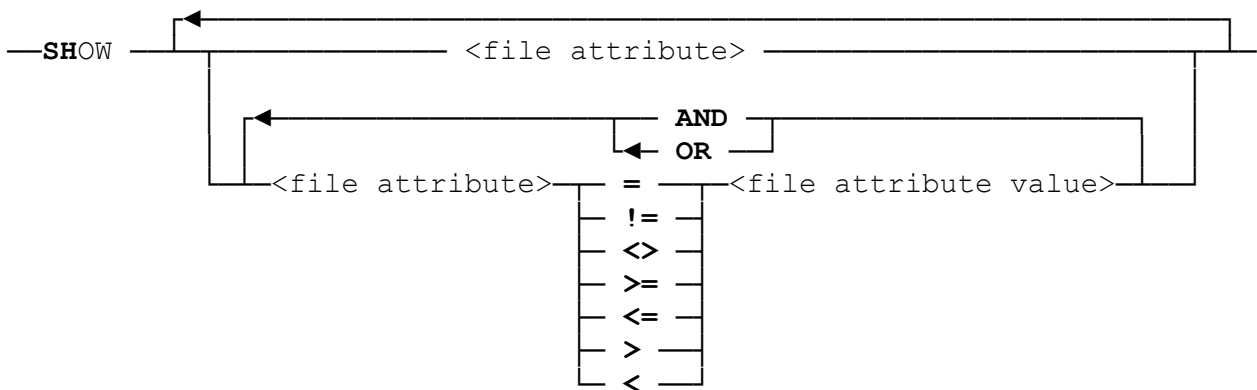
Ref: MCP/AS CANDE Operations Reference Manual (8600 1500-502) Pg 393



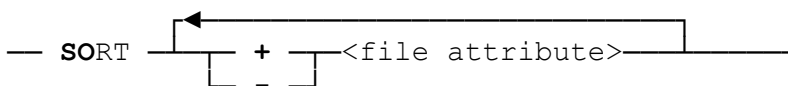
SELECT Expression



SHOW Expression



SORT Expression



List of File attributes

ALtertime	FILEOrganization	SECTors
AREALength	FILEStructure	SECURITYGuard
AREAS	FILESTRUCTUREValue	SECURItypetype
AREASEctors	FILEType	SECURITYTYPEValue
AREASINuse	FRamesize	SECURITYUse
Blocksize	INuse	SECURITYUSEValue
Bytes	LAstaccesstime	SENSitive
CREationtime	LEvels	TIimestamp
CRUnched	LOckedfile	UNIts
CYcle	MAxrecsize	UNITSValue
EXTmode	MINrecsize	USerinfo
EXTMODEValue	NAme	VERsion
FAMILYname	NOte	WARnings
FILEKind	RECORD	WARNINGSValue
FILEKINDValue	RELeaseid	
FILELength	SAvefactor	

Differences in output:

FILES

```
(DBTEST) ON WORK
. T : JOB
. DB
. . MARK
. . . AUDIT
. . . . FILE : COBOL85
. DO
. . F : SEQDATA
. CMP
. . AUDITS : ALGOL
. DBA
. . SOURCE
. . . DESCRIPTION
. . . . EXTRACT : ALGOL
. OLD
. . PATHMATEORDERS
. . . AUDIT2 : DATA
. . . AUDIT3 : DATA
. . . AUDIT4 : DATA
. . . AUDIT5 : DATA
. . . AUDIT6 : DATA
. . . AUDIT7 : DATA
. . . AUDIT8 : DATA
. . . AUDIT9 : DATA
```

FILES :S

= ON WORK

File Name	Filekind	Records	Sectors	CreationTime
T	JOBSYMBOL	12	14	01/10/2001
DB/MARK/AUDIT/FILE	COBOL85SYMBO	437	210	01/05/2001
DO/F	SEQDATA	1	14	12/04/2000
CMP/AUDITS	ALGOLSYMBOL	668	336	01/10/2001
DBA/SOURCE/DESCRIPTION/EXTRACT	ALGOLSYMBOL	6285	3150	04/27/1999
OLD/PATHMATEORDERS/AUDIT2	DATA	41	360	01/22/2001
OLD/PATHMATEORDERS/AUDIT3	DATA	9	360	01/22/2001
OLD/PATHMATEORDERS/AUDIT4	DATA	9	360	01/22/2001
OLD/PATHMATEORDERS/AUDIT5	DATA	9	360	01/22/2001
OLD/PATHMATEORDERS/AUDIT6	DATA	9	360	01/22/2001
OLD/PATHMATEORDERS/AUDIT7	DATA	9	360	01/22/2001
OLD/PATHMATEORDERS/AUDIT8	DATA	9	360	01/22/2001
OLD/PATHMATEORDERS/AUDIT9	DATA	9	360	01/22/2001
OLD/PATHMATEORDERS/AUDIT10	DATA	9	360	01/22/2001
OLD/PATHMATEORDERS/AUDIT11	DATA	9	360	01/22/2001

FILES :L

= ON WORK

File Name	Attributes
T	Filekind= JOBSYMBOL Records= 12 Sectors= 14 CreationTime = 01/10/2001 @ 17:48:29
DB/MARK/AUDIT/FILE	Filekind= COBOL85SYMBOL Records= 437 Sectors= 210 CreationTime = 01/05/2001 @ 16:28:18
DO/F	Filekind= SEQDATA Records= 1 Sectors= 14 CreationTime = 12/04/2000 @ 08:54:29
CMP/AUDITS	Filekind= ALGOLSYMBOL Records= 668 Sectors= 336 CreationTime = 01/10/2001 @ 18:52:51
DBA/SOURCE/DESCRIPTION/EXTRACT	Filekind= ALGOLSYMBOL Records= 6285 Sectors= 3150 CreationTime = 04/27/1999 @ 13:19:21
OLD/PATHMATEORDERS/AUDIT2	Filekind= DATA Records= 41 Sectors= 360 CreationTime = 01/22/2001 @ 13:42:45

FILES OLD/= :S gives the same output as **FILES OLD=** but is much faster.

Examples

1. How do I see the files that I worked on last?

```
FILES {SORT - LASTACCESSTIME}
```

OR

```
FILES {SORT - ALERT}
```

```
= ON WORK {SORT - ALERT SHOW ALTER}
```

File Name	Alerttime
-----+-----	
PATHMATEORDERS/CONTROL	01/24/2001 @ 11:59:35
PATHMATEORDERS/AUDIT34	01/24/2001 @ 11:59:35
PATHMATEORDERS/REPATH/RP-SET	
	01/24/2001 @ 11:59:35
PATHMATEORDERS/REPATH/DATA	
	01/24/2001 @ 11:59:34
WFL/ROLLBACK/PATHMATEORDERS	
	01/24/2001 @ 11:59:31
JUNK/FILE2	01/24/2001 @ 10:59:27
JUNK/FILE	01/24/2001 @ 10:57:11
CANDE/CODE1720	01/24/2001 @ 10:54:16
OLD/PATHMATEORDERS/CONTROL	
	01/23/2001 @ 18:57:23
OLD/PATHMATEORDERS/AUDIT33	
	01/23/2001 @ 18:57:13

2. How do I see files that haven't been accessed in a long time?

```
FILES {SORT + LASTA}
```

```
= ON WORK {SORT + LASTA SHOW LASTA}
```

File Name	LastaccessTime
EXAMPLE/TADS/REMOTE	12/11/2000 @ 09:58:38
WFL/PRINTAUDIT	12/11/2000 @ 21:33:17
PATHMATEORDERS/PATHMATEORDERS/DATA	12/19/2000 @ 19:05:48
WFL/COPY/DB	12/19/2000 @ 22:16:19

3. How do I find all my WFL files?

```
FILES {SEL FILEK = JOB= SHOW FILEKIND REC SORT - REC}
```

```
= ON WORK {SEL FILEK = JOB= SHOW FILEKIND REC SORT - REC}
```

File Name	Filekind	Records
WFL/COPY/DB	JOBSYMBOL	31
WFL/COPY/AUDITS	JOBSYMBOL	14
WFL/ROLLBACK	JOBSYMBOL	12
T	JOBSYMBOL	12
WFL/ROLLBACK/PATHMATEORDERS	JOBSYMBOL	10
WFL/PRINTAUDIT	JOBSYMBOL	10
WFLFILE	JOBSYMBOL	10
WFL	JOBSYMBOL	5

```
8 FILES FOUND
```

```
#
```

4. What files are open right now?

```
FILES {SEL INUSE = TRUE}
```

```
= ON WORK {SEL INUSE = TRUE}
```

File Name	Filekind	Records	Sectors	CreationTime
DMSUPPORT/PATHMATEORDERS	DMALGOLCODE	1424	1440	12/19/2000
DMINTERPRETER/PATHMATEORDERS	DMALGOLCODE	1605	1620	01/05/2001
PATHMATEORDERS/REPATH/DATA	DBRESTARTSET	7	1004	12/19/2000
PATHMATEORDERS/REPATH/RP-SET	DBDATA	12	114	12/19/2000
PATHMATEORDERS/AUDIT34	DATA	360	360	01/24/2001
PATHMATEORDERS/CONTROL	DBDATA	21	300	01/22/2001
PATHMATEORDERS/PATHMATEORDERS/DATA	DBDATA	1	1	12/19/2000

7 FILES FOUND

#

5. I only want to see my COBOL85 files (SOURCE and OBJECT)

```
FILES {SEL FILEK = =COBOL85=}:L
```

```
= ON WORK {SEL FILEK = =COBOL85=}
```

File Name	Attributes
DB/MARK/AUDIT/FILE	Filekind= COBOL85SYMBOL Records= 437 Sectors= 210 CreationTime = 01/05/2001 @ 16:28:18
OBJECT/EXAMPLE/DB/UPDATE	Filekind= COBOL85CODE Records= 381 Sectors= 504 CreationTime = 01/09/2001 @ 11:02:15
EXAMPLE/DB/UPDATE	Filekind= COBOL85SYMBOL Records= 141 Sectors= 75 CreationTime = 01/04/2001 @ 11:15:44
EXAMPLE/TADS/REMOTE	Filekind= COBOL85SYMBOL Records= 694 Sectors= 360 CreationTime = 12/11/2000 @ 09:58:28

4 FILES FOUND

#

6. I want to see everything about the COBOL85 files.

```
FILES {SEL FILEK = =COBOL85= SHOW ALL}
```

```
= ON WORK {SEL FILEK = =COBOL85= SHOW ALL}
```

File Name	Attributes
DB/MARK/AUDIT/FILE	<pre> Filekind= COBOL85SYMBOL FilekindValue= 89 Areas= 1 AreasinUse= 1 Bytes= 36708 Records= 437 Sectors= 210 Alertime = 01/05/2001 @ 16:28:18 AttmodifyTime = 01/05/2001 @ 16:28:22 BackupTime = 01/05/2001 @ 16:28:18 CopyDestTime = 01/05/2001 @ 16:28:18 CopySourceTime = 01/22/2001 @ 09:17:32 CreationTime = 01/05/2001 @ 16:28:18 ExecuteTime = 01/05/2001 @ 16:28:18 LastaccessTime = 01/23/2001 @ 11:12:47 ReadTime = 01/23/2001 @ 11:12:47 Timestamp = 01/05/2001 @ 16:28:22 Owner= DBTEST SecurityModeVa= 448 OwnerRWX= RWX GroupRWX= NO OtherRWX= NO Useguardfile = False Guardowner = False Setusercode = False Setgroupcode = False OwnerR = True OwnerW = True OwnerX = True GroupR = False GroupW = False GroupX = False OtherR = False OtherW = False OtherX = False Areasize= 1080 AreaLength= 15120 AreaSectors= 504 Blocksize= 420 FileLength= 6118 FrameSize= 48 Maxrecsize= 14 Minrecsize= 14 Crunched = True Cycle= 1 Version= 0 Extmode= EBCDIC ExtmodeValue= 4 FileOrg= 0 Fileclass= RECORDORIENTED FileclassValue= 1 Extdelimiter= UNSPECIFIED ExtdelimiterVa= 0 Filestructure= ALIGNED180 FilestructureV= 0 FileType= 0 Blockstructure= FIXED Blockstructure= 0 InUse = False Levels= 4 Lockedfile = False Resident = True Restrictedfile = False Savefactor= 30 SecurityType= PRIVATE SecurityTypeVa= 0 SecurityUse= IO SecurityUseVal= 3 Sensitive = False Units= WORDS UnitsValue= 0 Userinfo= 000000000000 Alignment = False Banner = False Label= EBCDICLABEL Printerkind= DONTCARE Trainid= NOID </pre>

**7. How do I see files that were created yesterday between 1:30 PM and 6:00 PM?
(Assuming today is Jan 24, 2001).**

```
FILES {SELECT CRE >= 200101231330 AND CRE <= 200101231800 SHO CRE SORT - CRE}
```

```
File Name                CreationTime
-----+-----
OLD/PATHMATEORDERS/AUDIT32
                                01/23/2001 @ 17:57:44
OBJECT/DBTEST/PREPARE        01/23/2001 @ 17:57:37
DBTEST/PREPARE                01/23/2001 @ 17:57:36
OLD/PATHMATEORDERS/AUDIT31
                                01/23/2001 @ 14:24:24
WFLFILE                       01/23/2001 @ 14:01:43
OLD/PATHMATEORDERS/AUDIT30
                                01/23/2001 @ 14:01:42
OLD/PATHMATEORDERS/AUDIT29
                                01/23/2001 @ 14:00:11
OLD/PATHMATEORDERS/AUDIT28
                                01/23/2001 @ 13:52:18
OLD/PATHMATEORDERS/AUDIT27
                                01/23/2001 @ 13:48:22
```

9 FILES FOUND

Note: Timestamps are YYYYMMDDHHMMSSsss. No slashes, spaces, colons or anything. Trailing zeros are not necessary. ???01= would specify any date in any January.

8. I want to put a list of files into a file.

For this you use a separate but similar utility (*SYSTEM/PDIR). SYSTEM/PDIR has even more options and can be run as a task (e.g. from a WFL). The syntax is very similar to the CANDE FILES command.

Ref: System Software Utilities Operations Reference Manual - 8600 0460-505

```
U *SYSTEM/PDIR = SHOW NAME SELECT FILEK= COBOL85= :F FILELIST
```

```
#RUNNING 4659
#4659 PDIR:PK501 (DBTEST)FILELIST REPLACED ON WORK
#ET=0.8 PT=0.4 IO=0.1
```

```
L FILELIST
```

```
#FILE (DBTEST)FILELIST ON WORK
10 Name
20 DB/MARK/AUDIT/FILE
30 OBJECT/EXAMPLE/DB/UPDATE
40 EXAMPLE/DB/UPDATE
50 EXAMPLE/TADS/REMOTE
#
```

9. I want to remove the files in the above list.

```
G FILELIST; REP COL 1 \ REMOVE ' ; DO
```

Will also remove a file named "NAME"

FILEKIND Integer and Numeric Values

The integer and mnemonic values associated with FILEKIND for disk files are as follows:

0 NULLFILE	45 NEWPCODE	107 VLINKEDCODE
1 DIRECTORY or VERSIONDIRECTORY	46 SANSCODE	108 VMCPCODE
2 SYSTEMDIRECTORY	47 PASCALCODE	109 LCOBOLSYMBOL
3 CATALOG	48 RPGCODE	110 LCOBOLSL3CODE
4 BACKUPPRINTER or BACKUPDISK	50 FORTRAN77CODE	111 LCOBOLSL5CODE
5 RECONSTRUCTIONFILE	53 SORTCODE	112 SFORTRANCODE
6 SYSTEMDIRFILE	54 COBOL74CODE	113 SLINKEDCODE
7 JOBDESCFILE	55 CCCODE	114 SMCPCODE
8 ARCHIVELOG	57 COBOL85CODE	115 FIRMWARE
9 BOOTCODE	59 PASCAL83CODE	116 OHNESYMBOL
10 BACKUPVPSID	62 BOUNDCODE	165 MDTTEST
11 DASDLDATA	63 CODEFILE	166 MDTDUMP
12 CPAFILE	64 ALGOLSYMBOL	167 PROMBURNERDATA
13 FTAUDIT	65 COBOLSYMBOL	168 CONFIGURATIONDATA
14 RESTRICTEDFILE	66 FORTRANSYMBOL	169 CONFIDENCECODE
15 XDISKFILE	67 XALGOLSYMBOL	176 MP1FIRMWARE
16 KEYSFILE	68 PLISYMBOL	177 MP1ALGOLCODE
18 PRINTFILE	69 JOVIALSYMBOL	181 FONT
19 REMOTEAUDIT	71 ESPOLSYMBOL	182 FORM
20 COMPILERCODEFILE	72 DCALGOLSYMBOL	183 GRAPHICS
21 CHECKPOINTFILE	73 BASICSYMBOL	184 LIBMAINTDIRECTORY
22 CPJOBFILE	74 XFORTRANSYMBOL	185 WRAPPEDDATA
23 DCPCODE	75 JOBSYMBOL	186 CONTAINERDATA
24 NDLCODE	77 VFORTRANSYMBOL	190 PERMDIR
25 NDLIICODE	78 SFORTRANSYMBOL	191 BDDATA
26 RECOVERYFILE	79 NEWPSYMBOL	192 DATA
27 SCHEDULEFILE	80 SANSSYMBOL	193 SEQDATA
28 INFOFILE	81 PASCALSYMBOL	194 GUARDFILE
29 LIBRARYCODE	82 RPGSYMBOL	195 APLFILE or APLDATA
30 INTRINSICFILE	83 NDLIISYMBOL	196 APLWORKSPACE or APLWORKSOURCE
31 MCPCODEFILE	84 FORTRAN77SYMBOL	197 CDATA
32 ALGOLCODE	85 SORTSYMBOL	198 CSEQDATA
33 COBOLCODE	86 COBOL74SYMBOL	199 DBRESTARTSET
34 FORTRANCODE	87 CCSYMBOL	200 DBDATA
35 XALGOLCODE	89 COBOL85SYMBOL	201 TEXTDATA
36 PLICODE	91 PASCAL83SYMBOL	203 FTPDATA
37 JOVIALCODE	94 BINDERSYMBOL	204 PDUMPFIL
39 ESPOLCODE	95 DASDLSYMBOL	205 FOLDER
40 DCALGOLCODE	96 DMALGOLSYMBOL	206 MSGDRAFT
41 BASICCODE	97 DCPSYMBOL	207 MAILMSGSTORE
42 XFORTRANCODE	98 NDLSYMBOL	238 DEVNULL
43 JOBCODE	99 LOG	240 FIFO
44 DMALGOLCODE	104 MDLCODE	
	105 MDLSYMBOL	
	106 VFORTRANCODE	